

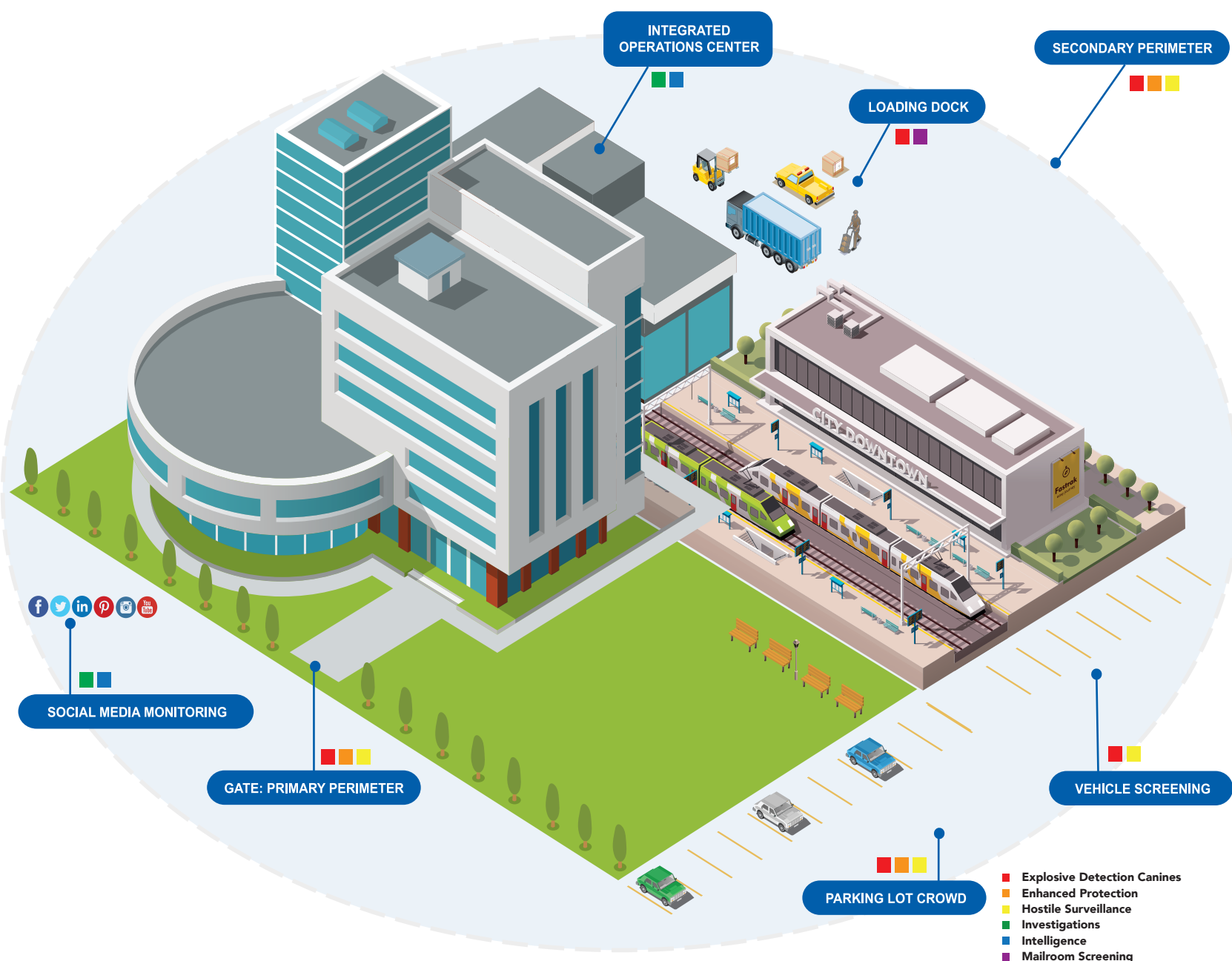
MSA
SECURITY®

COVID-19: Considerations for your security plan

As this unprecedented situation develops, businesses must consider the potential for civil unrest. It happens quickly and can put your people and assets at risk. Though your facility may be shut down at the moment, it's critical to mitigate persistent vulnerabilities. Ensure you are equipped to secure your business through any closures and your security plan is fluid in this ever-changing environment.

- ✓ Start an intelligence gathering operation
- ✓ Monitor your facilities for civil unrest with a physical security presence
- ✓ Assess your current guard force procedures to see if they are ready for the increase in presence when necessary
- ✓ If you do not have a current guard force, consider a measure that will serve as a deterrent for criminal behavior
- ✓ Build a plan that addresses medical clearance and be prepared
- ✓ Review all entry control, including policies and procedures
- ✓ Consider an increase in signage
- ✓ Start implementing effective security technologies that promote social distancing during times of workforce reductions

Fill the Gap. Secure Assets. Stay Protected.



New York, NY
+1 (212) 509-1336

Arlington, VA
+1 (703) 657-4095

San Diego, CA
+1 (858) 609-1541

Hong Kong
+ (852)-3690-8886

Toronto
+1 (905) 749-1486